

A 2.3mW 10-bit 170MS/s Two-Step Binary-Search Assisted Time-Interleaved SAR ADC

Si-Seng Wong, U-Fat Chio, Yan Zhu, Sai-Weng Sin, Seng-Pan U¹, R. P. Martins²

State-Key Laboratory of Analog and Mixed Signal VLSI (http://www.fst.umac.mo/en/lab/ans_vlsi/website/index.html)

Faculty of Science and Technology, University of Macau, Macao, China

1- Also with Synopsys - Chipidea Microelectronics (Macao) Limited

2- On leave from Instituto Superior Técnico / TU of Lisbon, Portugal

E-mail: yb17425@umac.mo

Abstract—A 10-bit 170MS/s two-step binary-search assisted time-interleaved SAR ADC architecture is proposed, where the ADC's front-end is built with a 5b binary-search ADC, shared by two time-interleaved 6b SAR ADCs in the 2nd-stage. The design prevents the use of opamp that causes large power dissipation. Besides, a process insensitive asynchronous SAR logic is proposed to further reduce the delay of SA loop. The ADC was fabricated in 65nm CMOS and achieves 54.6dB SNDR at 170MS/s with only 2.3mW of power consumption, leading to a FoM of 30.8fJ/conversion-step.

Keywords-- Analog-to-Digital Converter (ADC), binary-search ADC, SAR ADC, two-step ADC, time-interleaved.

I. INTRODUCTION

Mobile video and high definition television applications require medium-resolution, high-speed, and low-power design specifications, which can be achieved by using pipelined [1][2] or pipelined-SAR ADCs [3][4]. The pipelined ADCs require multiple op-amps that consume large power and become tough to be designed with the technology scaling under low supply voltage [1][2]. Pipelined-SAR ADC is a potential architecture to achieve both high-speed and low-power, while the implementation of inter-stage gain still requires one op-amp that consumes static power [3][4].

The SAR ADC architecture is well-known and power efficient for medium-resolution application, while its speed is less than 100MS/s for resolutions >9b because of feedback loop delay of N-bit cycling, especially the switching of MSB capacitors in the DAC array, which is the most critical. Another comparator-based binary-search ADC [5] achieves both low-power and high-speed with limited resolution due to the comparators' offsets and exponential growth of hardware (comparators, switch matrixes, decoders, and reference ladder).

This paper presents a two-step Binary-Search (BS) assisted Time-Interleaved (TI) SAR ADC architecture, which takes the speed, resolution, and power benefits of these two types of ADCs. The 1st-stage implementing a binary-search ADC determines coarse 5b. The 2nd-stage utilizes the TI-SAR scheme to improve the speed with low-power dissipation. Besides, the architecture avoids using opamp to save power

and overcomes the resolution and speed limits of BS and SAR ADCs, respectively. In addition, a process insensitive asynchronous SAR logic is also proposed, which auto-detects the logic delay of each cycling bit, instead of using a fixed delay cell with off-chip tunable control as [6]. A 10-bit 170MS/s prototype is verified in 65nm CMOS with FoM of 30.8fJ and 36.4fJ per step @ DC/Nyquist input.

II. PROPOSED ADC ARCHITECTURE

The proposed ADC architecture is shown in Fig. 1, which is composed of a high-speed BS ADC shared by two interleaved low-speed SAR ADCs. The 1st-stage is a 5b BS ADC [5], composed by 5 comparators, a resistive reference ladder, and distributed track-and-holds (T/Hs). Compared to flash ADCs, BS ADCs activate the comparators bit-by-bit rather than activating all comparators at once, thus avoiding large power dissipation. The 2nd-stage TI-SAR ADCs converts the rest 6b fine code. Each SAR ADC consists of a

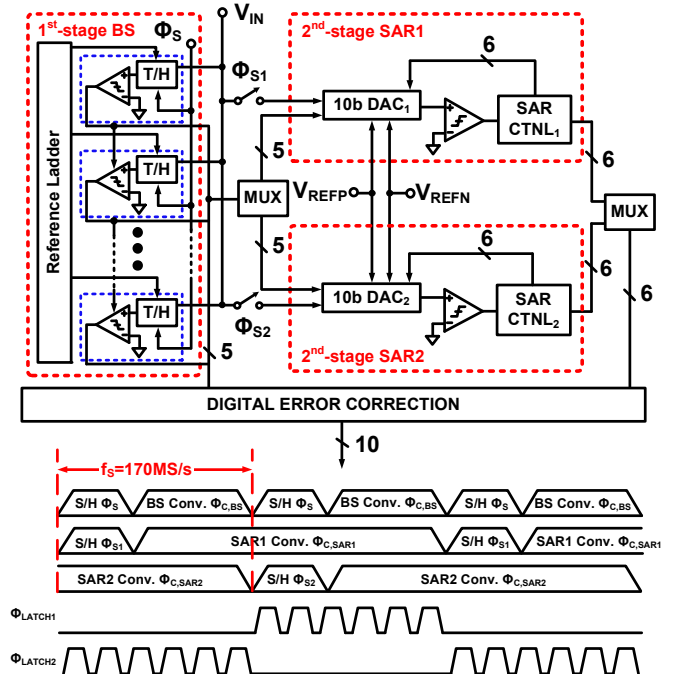


Fig. 1. Block diagram of the proposed 10-bit two-step ADC.

This work was financially supported by Research Grants from University of Macau and Macao Science & Technology Fund (FDCT).

last bit is quantized, in which the comparator is always clocked after the switching signal. In this way, the SA loop is clocking itself at its optimized frequency, and insensitive to the process variation by the proposed asynchronous logic.

IV. CIRCUIT IMPLEMENTATION

A. 1st-stage BS ADC with redundant references

Fig. 3 shows the 5b BS ADC for the 1st-stage, which is modified from [5]. There are 5 sub-stages, and each sub-stage has its own comparator and distributed T/Hs. Totally, 9 T/Hs are used, and the unit capacitance of each T/H is 50fF. The comparators of the sub-stages are activated one-by-one asynchronously without feedback loop to achieve both low-power and high-speed. When compared with [5], 1/2LSB of the reference voltages is shifted by adding $1/64 \cdot V_{REF}$ to each residue, so the implemented design can perform redundancy for digital error correction. Besides, the code overflow happens when the output code of the 1st-stage is “11111”. In general flash sub-ADCs one comparator must be removed, so that the maximum output code can only be “11110.” However, in the implemented BS ADC, if the comparator of the last sub-stage is removed, the LSB code is lost. Therefore, when the first 4b code is “1111”, the supply voltage is selected as residue rather than a reference voltage for the last sub-stage, and the input voltage is never larger than the supply voltage, so that the comparator of the last sub-stage will quantize an output bit of ‘0’, and the maximum code can only be “11110”.

B. 2nd-stage DAC array

Fig. 4 shows the implemented 2nd-stage DAC array. The split DAC structure is used to reduce the total capacitance and area. The unit capacitor C formed by Metal-Oxide-Metal (MOM) fringing structure results a unit value of 20fF. From the layout extraction, the top-plate parasitic capacitance is around 5%. The attenuation capacitance C_{att} is designed to $1.07C$ (21.4fF) rather than ideal value of $1.03C$ to compensate 5% top-plate parasitic capacitance. The total capacitance of the 2nd-stage DAC array is 0.8pF.

C. 2nd-stage Dynamic comparator

A high-resolution low-noise comparator is required for the 2nd-stage since there is no amplification between the stages. A three-stage dynamic comparator [7] is utilized for this implementation, as shown in Fig. 5, because of its low-noise, low-offset, and high-resolution performance. During the reset phase ($V_{CLK}='0'$), the intermediate nodes (A^+ , A^-) and the

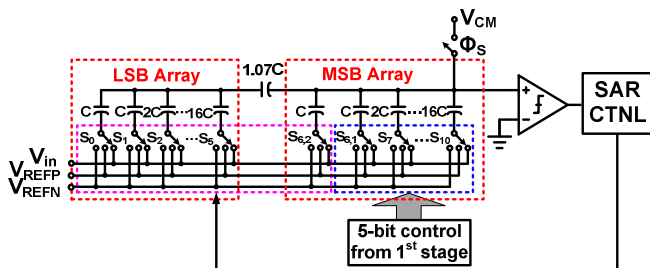


Fig. 4. Implemented 2nd-stage DAC array

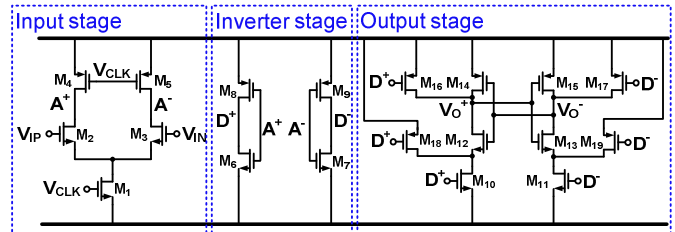


Fig. 5. Implemented three-stage dynamic comparator

output nodes (V_0^+ , V_0^-) are charged to V_{DD} to clear the memory of previous status. Once the comparator is activated ($V_{CLK}='1'$), the input stage and inverter stage amplify the input difference. The output stage latches the amplified signal to output by regeneration of back-to-back inverters.

V. DESIGN CONSIDERATIONS

The design considerations of the proposed architecture includes inter-stage error (errors between 1st and 2nd stage) and time-interleaved (mismatching between TI-SAR) as described below.

A. Inter-stage errors

Both 1st and 2nd stage are using bottom plate sampling, and the 2nd-stage residue is generated by digital code together with input signal at the DAC arrays rather than analog-signal only. Therefore, the inter-stage gain error caused by the parasitic capacitances at the top-plates of the several T/Hs and DAC arrays can be avoided. The digital error correction relaxed the reference, offset, and time error requirement of the 1st-stage from 11b to 6b. The resistive reference ladder, which can be easily designed at a matching level of >6b, is implemented for the BS ADC.

Since the input range of the ADC is $\pm 0.8V_{P-P}$, the full-scale voltage (V_{FS}) of the 2nd-stage is $\pm 25mV_{P-P}$. When the offset of the 1st-stage is larger than 25mV, the input of the 2nd-stage will be saturated. Besides, the offset requirement of the 1st-stage is also 25mV, and this offset is corrected by the offset calibration through unbalanced capacitive loading [5].

The timing error between the 1st and 2nd stage can be tolerated by the error correction, which is 32ps for the proposed architecture. It is not problematic to optimize the timing error by balancing the wire length (75 μm), width (0.1 μm), and loading between the stages to reduce the timing error.

B. Time-interleaved mismatches

The reference matching for TI 2nd-stage SARs are 11b, which is decided by capacitor matching of the DAC array, and this matching can be achieved within 11b level using common-centroid layout technique.

The offset mismatch between the channels of the 2nd-stage requires a 1σ of 0.7mV. In this design, the 2nd-stages' comparators offset are cancelled in the digital domain by subtracting the mean code between channels using off-chip calibration.

The time skew of the 2nd-stage SARs must be fewer than 2ps for 10b 170MS/s requirement because they are using different DAC arrays to sample the interleaved input signal as

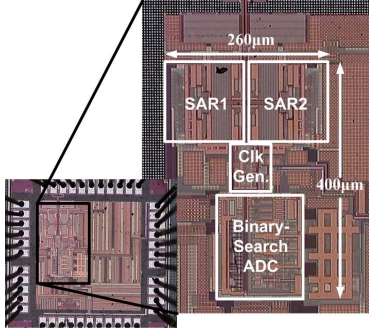


Fig. 6. Chip micrograph

shown in Fig. 1. The matched interleaved clocks between two channels are generated by the master clock through a divider-by-2 low-skew clock generator to achieve maximum time skew of 1.2ps under 30 Monte Carlo simulation results.

VI. MEASUREMENT RESULTS

The prototype ADC was fabricated in 1P7M 65nm CMOS. Fig. 6 shows the die chip photograph with an active area of 0.104mm^2 ($260\mu\text{m} \times 400\mu\text{m}$). The prototype ADC consumes 2.3mW of power operating at 170MS/s including 0.77mW analog power (T/Hs, DACs, and comparators) and 1.52mW digital power (clock generator, SAR logic, and binary-search logic). Fig. 7 shows the measurement result among 20 chips. No offset and timing skew tones are observed within the chips. By the mean performance among the chips to report the results, the measured SNDR at 1.3MHz input is 54.6dB. The FoM, defined as $\text{Power}/(2^{\text{ENOB}} \cdot f_s)$, is 30.8fJ/conversion-step. At Nyquist input frequency, the SNDR is 53.2dB, with a resulting FoM of 36.4fJ/conversion-step. The SNDR and SFDR versus input frequency are shown in Fig. 8, and the ERBW is 116MHz. Fig. 9 shows the measured DNL/INL, the DNL is +0.42/-0.52 LSB and the INL is +0.93/-0.81 LSB. Fig. 10 shows both the

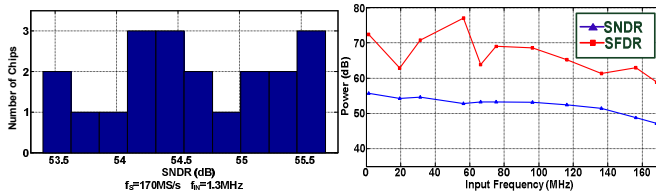


Fig. 7. Measured SNDR histogram

Fig. 8. Dynamic performance

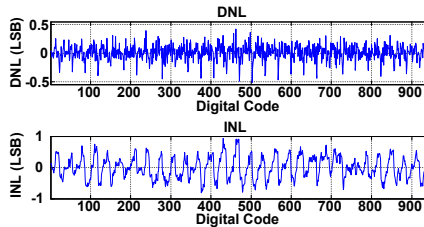


Fig. 9. Measured DNL/INL

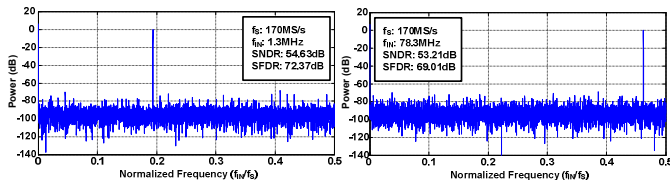


Fig. 10. 16384 point FFT at 1.3MHz & 78.3MHz input (Decimated by 25)

measured FFT spectrum @ DC and near Nyquist input. The performance summary and comparison with state-of-the-art pipelined and pipelined-SAR ADCs are shown in Table I.

I. CONCLUSIONS

A 10-bit 170MS/s two-step binary-search assisted time-interleaved SAR ADC architecture is proposed, where the ADC's front-end is built with a 5b binary-search ADC, shared by two time-interleaved 6b SAR ADCs in the 2nd-stage. The design prevents the use of opamp that causes large power dissipation. Besides, a process insensitive asynchronous logic is proposed to further reduce the delay of SA loop. The ADC was fabricated in 65nm CMOS, occupying 0.104mm^2 of active area. It achieves 54.6dB SNDR at 170MS/s, consuming 2.3mW of power, with a FoM of 30.8fJ/conversion-step. At Nyquist input frequency, the SNDR is 53.2dB with an FoM of 36.4fJ/conversion-step.

ACKNOWLEDGEMENTS

The authors would also like to thank Hou-Lon Choi for the measurement support.

REFERENCES

- [1] Peng, G.U. Huang, H. Li, P. Wan, and P. Lin, "A 48-mW, 12-bit, 150-MS/s Pipelined ADC with Digital Calibration in 65nm CMOS," in *proc. of IEEE Custom Integrated Circuits Conference(CICC)*, pp. 1-4, Sep. 2011.
- [2] Y.C. Huang and T.C. Lee, "A 10b 100MS/s 4.5mW Pipelined ADC with a Time Sharing Technique," *ISSCC Dig. Tech. Papers*, pp. 300-301, Feb. 2010.
- [3] Y.D. Jeon, Y.K. Cho, J.W. Nam, K.D. Kim, W.Y. Lee, K.T. Hong and J.K. Kwon, "A 9.15mW 0.22mm² 10b 204MS/s Pipelined SAR ADC in 65nm CMOS," in *Proc. of IEEE Custom Integrated Circuits Conference(CICC)*, pp. 1-4, Sep. 2010.
- [4] Y. Zhu, C.H. Chan, S.W. Sin, S.P. U, and R.P. Martins, "A 35fJ 10b 160MS/s Pipelined-SAR ADC with Decoupled Flip-Around MDAC and Self-Embedded Offset Cancellation," in *Proc. of 2011 Asian Solid-State Circuit Conference (A-SSCC)*, pp. 61-64, Nov. 2011.
- [5] S.S. Wong, U.F. Chio, C.H. Chan, H.L. Choi, S.W. Sin, S.P. U, and R. P. Martins, "A 4.8-bit ENOB 5-bit 500MS/s Binary-Search ADC with Minimized Number of Comparators," in *Proc. of 2011 Asian Solid-State Circuit Conference (A-SSCC)*, pp. 73-76, Nov. 2011.
- [6] J. Yang, T.L. Naing, and R.W. Brodersen, "A 1 GS/s 6 Bit 6.7 mW Successive Approximation ADC using Asynchronous Processing," *IEEE J. Solid-State Circuits*, vol.45, no. 8, pp. 1469-1478, Aug. 2010.
- [7] H. J. Jeon, Y. B. Kim, and M. Choi, "Offset Voltage Analysis of Dynamic Latched Comparator," in *Proc. of 54th International Midwest Symposium on Circuits and Systems (MWSCAS)*, pp.1-4, Aug. 2011.

TABLE I

PERFORMANCE SUMMARY & BENCHMARK WITH STATE-OF-THE-ART

	CICC'11 [1]	ISSCC'11 [2]	CICC'10 [3]	A-SSCC'11 [4]	This work	
Technology	65	90	65	65	65	nm
Architecture	Pipelined	Pipelined	Pipelined-SAR	Pipelined-SAR	BS+TI-SAR	
Resolution	12	10	10	10	10	bit
Sampling Rate	150	100	204	160	170	MS/s
Supply Voltage	1.2	1	1	1.1	1	V
Input Range	1.5	N/A	N/A	1.1	1.6	V _{P.P}
SNDR	DC	67	55	55.2	55.4	54.6
	Nyquist	55	53.9	53.2	52.6	53.2
DNL/INL	0.3/1.02	0.81/1	0.74/0.9	0.46/1.7	0.52/0.93	LSB
Power	48	4.5	9.15	2.72	2.3	mW
FoM	DC	194	98	95.4	35	30.8
	Nyquist	697	111.2	120.5	48.6	36.4
Active Area	0.99	0.058	0.22	0.21	0.104	mm ²